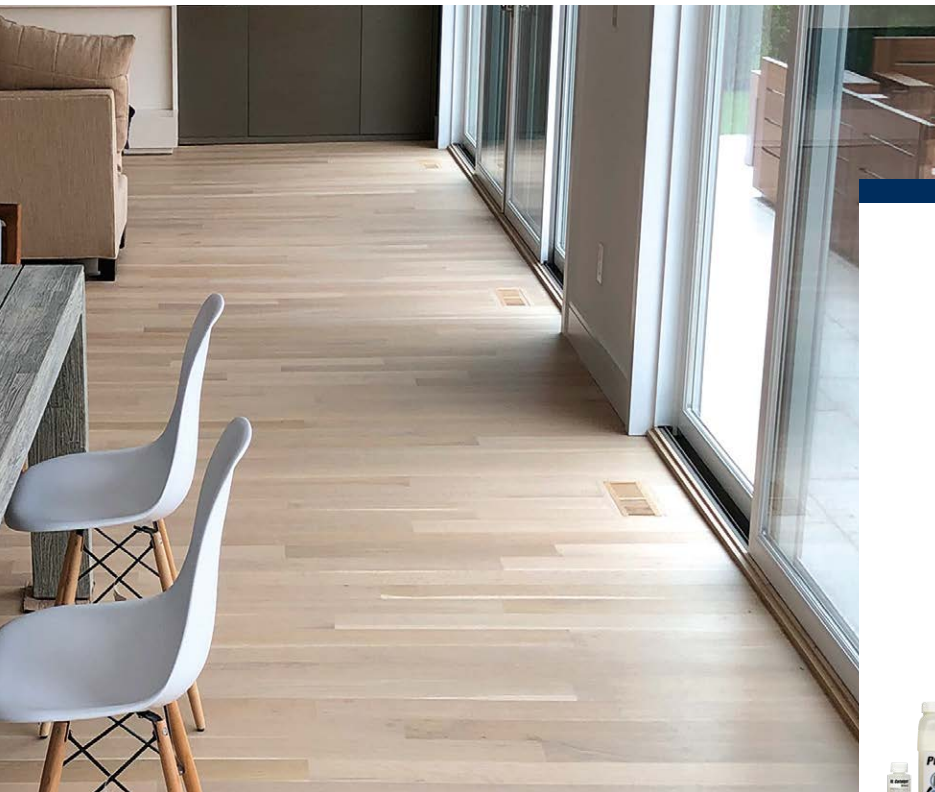


PROFESSIONAL PRODUCTS

WOOD FLOOR CARE SOLUTION GUIDE



basic[®]
COATINGS

The product line includes:

- StreetShoe NXT
- Emulsion PRO+
- Player's Choice One
- PureMatte
- MainStreet
- HyperTone Stains
- GymShoe



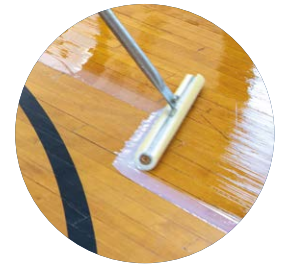
AMERICAN QUALITY

Our leadership in water-based coating technology reflects the ingenuity and hard work that define American manufacturing. We are continually pushing the boundaries of technology, processes, and materials to create products that set new standards for quality. Made in the USA, we support local workers and contribute to the national economy, ensuring that every purchase from Basic Coatings[®] is an investment in quality and country.



PROFESSIONAL GRADE

Our line is meticulously crafted for those who demand the best. Basic Coatings' products are designed with the professional in mind – tough, reliable, and ready to tackle any challenge. With Basic Coatings, you're not just choosing a coating; you're choosing the strength and durability of professional-grade performance that's built to last.

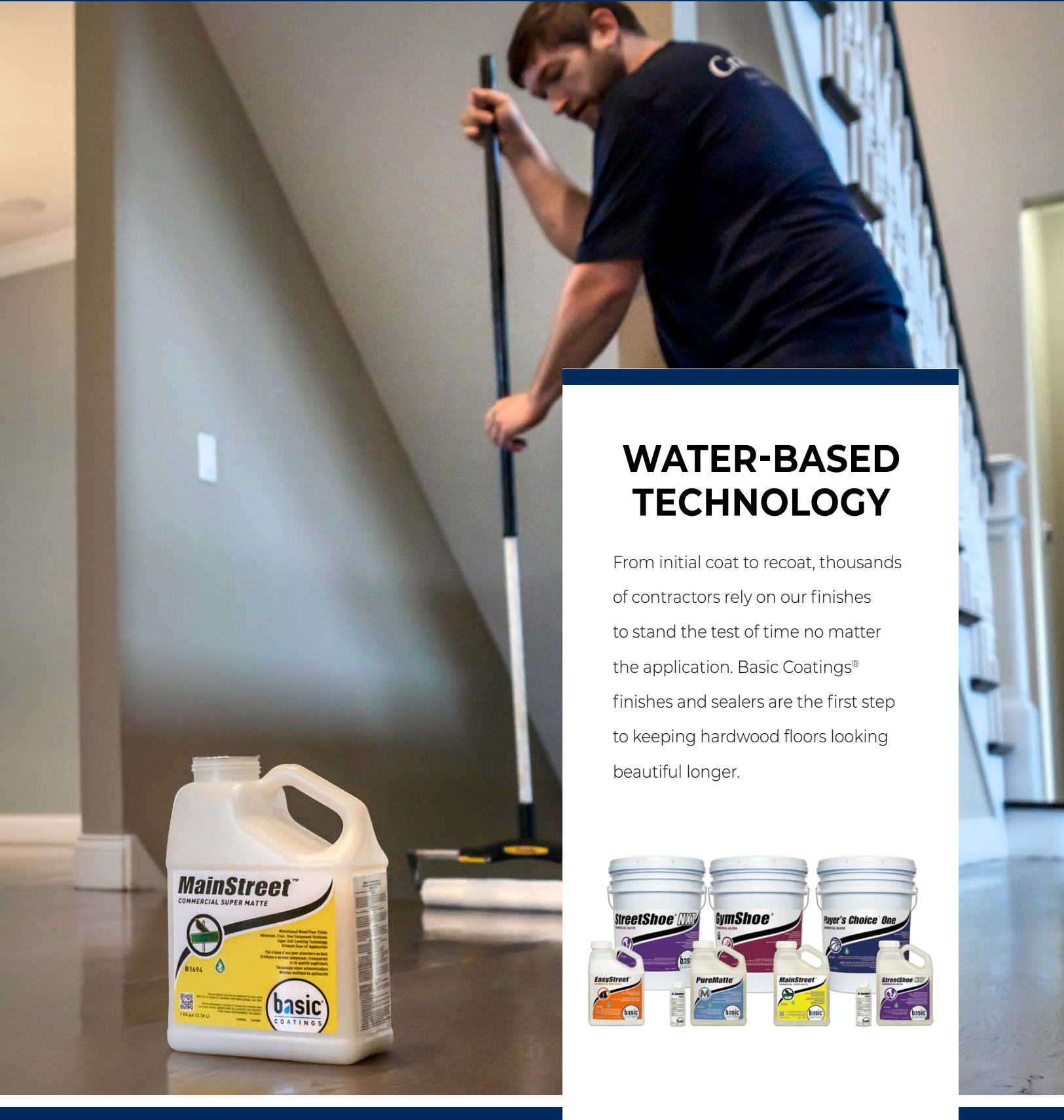


FOCUSED EXPERTISE

We excel where it matters most, and our specialized focus on sealers and finishes enables us to provide the best in these crucial categories. Our commitment to quality over quantity ensures that professionals can trust Basic Coatings to help them deliver elite results where it counts most, on the biggest stages and the most critical projects.

WHERE GREAT FINISHES START

Basic Coatings[®] is the top choice of wood floor professionals who accept nothing but the best. As the originators of water-based floor finishes, Basic Coatings has been fusing the spirit of American ingenuity with a laser focus on excellence to craft professional-grade coatings for over 30 years. In addition to finishes and sealers that lead the industry in durability and performance, our stains, maintenance products, and equipment set new standards for quality across sport, commercial, and residential projects.



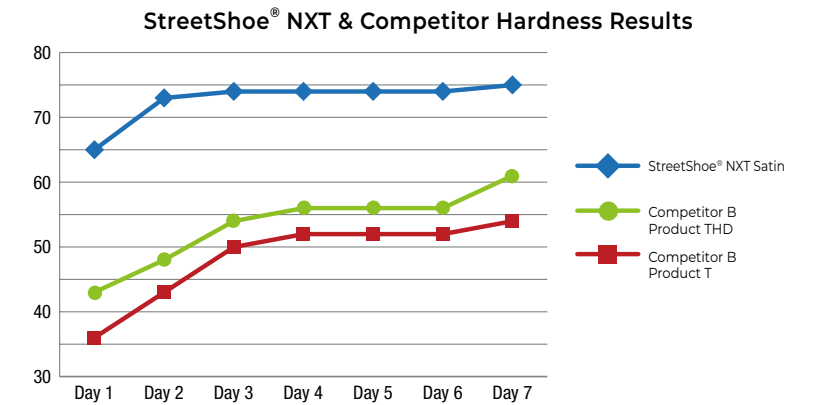
WATER-BASED TECHNOLOGY

From initial coat to recoat, thousands of contractors rely on our finishes to stand the test of time no matter the application. Basic Coatings[®] finishes and sealers are the first step to keeping hardwood floors looking beautiful longer.



FASTER CURE TIMES

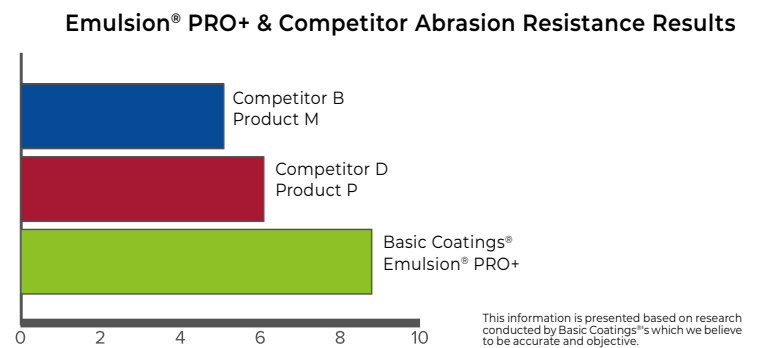
When tested against industry-leading finishes, StreetShoe[®] NXT outperforms the competition, reaching a 90% full cure in just 24 hours. This means less down time and better hardness.



König Hardness Scale
StreetShoe NXT wins the race for faster cure times and overall hardness when compared to competitors.
This information is presented based on research conducted by Basic Coatings[®] which we believe to be accurate and objective.

DURABILITY

Your floor finish should have resistance to abrasion, withstanding scuffing or erosion. To prove better durability, our water-based products were put to the test against competitive water-based and oil modified urethane (OMU) products.



WATER-BASED FINISH

PureMatte™ Water-Based Wood Floor Finish

550 - 700 sq. ft. per gallon

Item #	Finish	Size
B1663-4312	Commercial Matte	4 - 1 Gal. F-Style w/ catalyst



Premium clear, two-component water-based wood floor finish.

- Best in class soil resistance and cleanability
- 90% cure in 24 hours
- 24-hour pot life
- Lowest sheen available < 5
- MAS Certified Green® for low emissions

StreetShoe® NXT Water-Based Wood Floor Finish

450 - 550 sq. ft. per gallon

Item #	Finish	Size
B1664-4312	Commercial Gloss	4 - 1 Gal. F-Style w/ catalyst
B1664-0512	Commercial Gloss	1 - 5 Gal. Pail w/ catalyst
B1665-4312	Commercial Semi-Gloss	4 - 1 Gal. F-Style w/ catalyst
B1665-0512	Commercial Semi-Gloss	1 - 5 Gal. Pail w/ catalyst
B1666-4312	Commercial Satin	4 - 1 Gal. F-Style w/ catalyst
B1666-0512	Commercial Satin	1 - 5 Gal. Pail w/ catalyst
B1667-4312	Commercial Super Matte	4 - 1 Gal. F-Style w/ catalyst
B1667-0512	Commercial Super Matte	1 - 5 Gal. Pail w/ catalyst



Premium, two-component water-based wood floor finish.

- Fast curing, "Coat Today, Play Tomorrow"
- Excellent chemical and scuff resistance
- The industry standard for durability
- 24-hour pot life
- MAS Certified Green® for low emissions

MainStreet™ Water-Based Wood Floor Finish

450 - 550 sq. ft. per gallon

Item #	Finish	Size
B1693-D612	Commercial Semi-Gloss	2 - 1 Gal. F-Style Bottles
B1692-D612	Commercial Satin	2 - 1 Gal. F-Style Bottles
B1694-D612	Commercial Super Matte	2 - 1 Gal. F-Style Bottles



High-end clear, 1-component, super self-leveling, water-based urethane wood floor finish.

- Super-self leveling technology and enhanced defoaming
- Ultimate ease-of-application
- Dries clear; non-yellowing
- MAS Certified Green® for Low Emissions
- Low odor; low VOC's (less than 165 g/l)

EasyStreet™ Water-Based Wood Floor Finish

550 - 700 sq. ft. per gallon

Item #	Finish	Size
B1655-4312	Commercial Gloss	4 - 1 Gal. F-Style Bottles
B1656-4312	Commercial Semi-Gloss	4 - 1 Gal. F-Style Bottles
B1657-4312	Commercial Satin	4 - 1 Gal. F-Style Bottles
B1657-0512	Commercial Satin	1 - 5 Gal. Pail
B1658-4312	Commercial Super Matte	4 - 1 Gal. F-Style Bottles



High-end clear, 1-component water-based wood floor finish.

- High build, with excellent abrasion and durability
- Easy to apply
- Non-yellowing formula, finish will not amber over time
- Unlimited pot life
- MAS Certified Green® for low emissions

Emulsion® PRO+ Oil/Water Wood Floor Finish and Sealer

600 - 800 sq. ft. per gallon

Item #	Finish	Size
B0675-4312	Commercial Gloss	4 - 1 Gal. F-Style Bottles
B0675-0512	Commercial Gloss	1 - 5 Gal. Pail
B01620-4312	Commercial Semi-Gloss	4 - 1 Gal. F-Style Bottles
B01620-0512	Commercial Semi-Gloss	1 - 5 Gal. Pail
B01619-4312	Commercial Satin	4 - 1 Gal. F-Style Bottles
B01619-0512	Commercial Satin	1 - 5 Gal. Pail
B01623-0512	Commercial Super Matte	4 - 1 Gal. F-Style Bottles



Advanced, one-component, oil and water floor finish.

- All-urethane formula
- Ambering, enhances beauty of wood
- Low VOC, low odor
- Not OMU, non-flammable
- VOC compliant in US and Canada
- MAS Certified Green® for low emissions

WATER-BASED SEALER

VersaSeal™ Water-Based Wood Floor Sealer

450 - 550 sq. ft. per gallon

Item #	Size
B1691-D612	2 - 1 Gal. F-Style Bottles



Premium, commercial, clear, one-component water-based wood floor sealer.

- Enhances natural wood tones
- Reduces tannin pull, side bonding, and grain raise
- Excellent abrasion (powders)
- Easy to apply

Raw Sealer™ Water-Based Wood Floor Sealer

450 - 550 sq. ft. per gallon

Item #	Size
B1680-D612	2 - 1 Gal. F-Style Bottles



Toned (white), one-component water-based wood floor sealer.

- Natural dry look for white oak floors
- Reduces tannin pull and side bonding
- Wet sealer indicator (during application)

Lock 'N Seal™ Water-Based Wood Floor Sealer

500 - 700 sq. ft. per gallon

Item #	Size
B0661-4312	4 - 1 Gal. F-Style Bottles



Clear, one-component, water-based floor sealer.

- Enhances natural wood tones
- Reduces tannin pull and side bonding
- Wet sealer indicator (during application)
- Ideal for white oak or wood species prone to tannin pull

Hydroline® Sealer Water-Based Wood Floor Sealer

500 - 700 sq. ft. per gallon

Item #	Size
B0656-4312	4 - 1 Gal. F-Style Bottles
B0656-0512	1 - 5 Gal. Pail



Clear, one-component water-based wood floor sealer.

- Non-yellowing formula, will not amber over time
- Colorless, clear film clarity
- Outstanding durability



SPORTS FLOOR SOLUTIONS

With low VOCs, faster dry times, and superior water-based durability, Basic Coatings® sports floor collection offers the performance, protection and professional appearance your floors need.



SPORTS FLOOR CARE

StreetShoe[®] NXT Water-Based Wood Floor Finish

600 - 800 sq. ft. per gallon



Premium, two-component water-based sports floor finish.

- Fast curing, "Coat Today, Play Tomorrow"
- Excellent chemical and scuff resistance
- The industry standard for durability
- High gloss
- 24-hour pot life
- MFMA compliant

Item #	Finish	Size
B1664-4312	Commercial Gloss	4 - 1 Gal. F-Style w/ catalyst
B1664-0512	Commercial Gloss	1 - 5 Gal. Pail w/ catalyst
B1665-4312	Commercial Semi-Gloss	4 - 1 Gal. F-Style w/ catalyst
B1665-0512	Commercial Semi-Gloss	1 - 5 Gal. Pail w/ catalyst
B1666-4312	Commercial Satin	4 - 1 Gal. F-Style w/ catalyst
B1666-0512	Commercial Satin	1 - 5 Gal. Pail w/ catalyst
B1667-4312	Commercial Super Matte	4 - 1 Gal. F-Style w/ catalyst
B1667-0512	Commercial Super Matte	1 - 5 Gal. Pail w/ catalyst

GymShoe[®] Water-Based Wood Floor Finish

600 - 800 sq. ft. per gallon



Advanced, two-component water-based sports floor finish.

- Excellent durability; floors look better longer
- Clear, non-yellowing urethane
- Easy water clean up
- Excellent depth of gloss
- 24-hour pot life
- MFMA compliant

Item #	Finish	Size
B1677-4312	Commercial Gloss	4 - 1 Gal. F-Style w/ catalyst
B1677-0512	Commercial Gloss	1 - 5 Gal. Pail w/ catalyst

Player's Choice[™] One Water-Based Wood Floor Finish

600 - 800 sq. ft. per gallon



High-end, one-component, water-based sports floor finish.

- Colorless, clear finish clarity
- Industry leading 1K durability
- Excellent chemical and perspiration resistance
- Easy to maintain
- MFMA compliant

Item #	Finish	Size
B1659-4312	Commercial Gloss	4 - 1 Gal. F-Style Bottles
B1659-0512	Commercial Gloss	1 - 5 Gal. Pail

Emulsion[®] PRO+ Water-Based Wood Floor Finish

600 - 800 sq. ft. per gallon



Advanced, one-component, oil and water-based floor finish.

- All-urethane formula
- Ambering, enhances beauty of wood
- Low VOC, low odor
- Not OMI, non-flammable
- VOC compliant in US and Canada

Item #	Finish	Size
B0675-4312	Commercial Gloss	4 - 1 Gal. F-Style Bottles
B0675-0512	Commercial Gloss	1 - 5 Gal. Pail
B01620-4312	Commercial Semi-Gloss	4 - 1 Gal. F-Style Bottles
B01620-0512	Commercial Semi-Gloss	1 - 5 Gal. Pail
B01619-4312	Commercial Satin	4 - 1 Gal. F-Style Bottles
B01619-0512	Commercial Satin	1 - 5 Gal. Pail
B01620-0512	Commercial Super Matte	4 - 1 Gal. F-Style Bottles

Hydroline[®] Sealer Water-Based Wood Floor Sealer

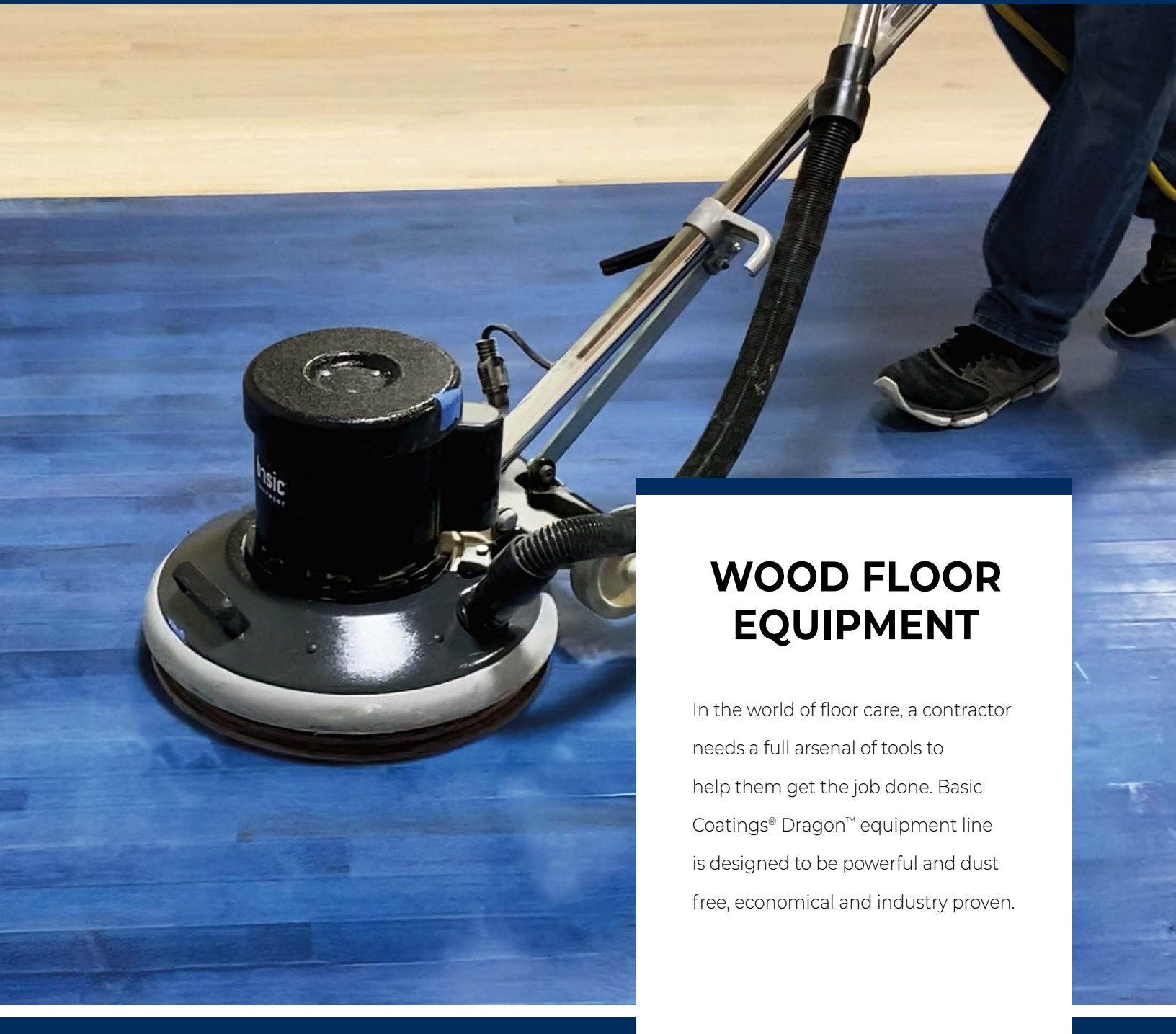
500 - 700 sq. ft. per gallon



Clear, one-component, water-based wood floor sealer.

- Non-yellowing formula, will not amber over time
- Colorless, clear film clarity
- Outstanding durability

Item #	Size
B0656-4312	4 - 1 Gal. F-Style Bottles
B0656-0512	1 - 5 Gal. Pail



WOOD FLOOR EQUIPMENT

In the world of floor care, a contractor needs a full arsenal of tools to help them get the job done. Basic Coatings® Dragon™ equipment line is designed to be powerful and dust free, economical and industry proven.

FLOOR EQUIPMENT

Dustless Floor Dragon™ 17" Dustless Floor Machine

2,400 sq. ft. per hour

Item #	Description	Pad Size
EB858-1212	17" Dustless Floor Machine w/ hose	16"



Adjustable solution control valve for all types of wood flooring.

- Reliable, high performance 1.5 hp motor
- Ergonomic, anti-fatigue handle grips with dual-lever control
- Heavy duty, triple-planetary, stainless steel gearbox
- Safety lock switch ensures safe operation
- Non-marking wheels and bumpers assure protection for molding and walls
- Dust skirt, 16" pad driver, and vacuum hose included

Sand Dragon™ 20" Orbital Sanding Machine

Item #	Description	Pad Size
EB128-0112	20" Orbital Sander	14" x 20"
EB128-0107	20" Orbital Sander (CA)	14" x 20"
EB128-0612	20" Orbital Sander w/ weight kit	14" x 20"



3,400 RPM orbit speed quickly abrades the toughest finish.

- Reliable, high performance 1.5 hp motor
- Non-marking wheels and bumpers assure protection for molding and walls
- Solid cast iron base and optional weight systems provide maximum durability
- Ergonomic, anti-vibration handle grips
- Optional dust containment skirt and vacuum port easily connects to any vacuum

Sand Dragon™ 28" Orbital Sanding Machine

Item #	Description	Pad Size
EB128-1112	28" Orbital Sander w/ weight kit	14" x 28"
EB128-1107	28" Orbital Sander w/ weight kit (CA)	14" x 28"



3,400 RPM orbit speed quickly abrades the toughest finish.

- Reliable, high performance 1.5 hp motor
- Non-marking wheels and bumpers assure protection for molding and walls
- Solid cast iron base and optional weight systems provide maximum durability
- Ergonomic, anti-vibration handle grips
- Optional dust containment skirt and vacuum port easily connects to any vacuum

Dust Dragon™ Lightweight Backpack Vacuum

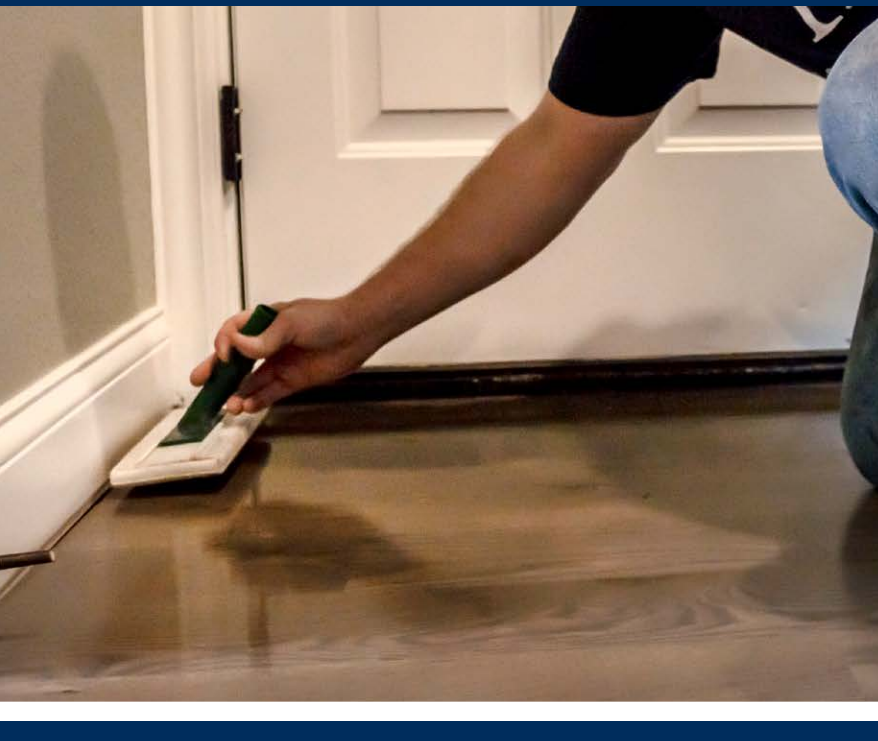
Item #	Description	Capacity
EB858-0812	22.5" Back Pack Vacuum w/ wand	5.0 Liters



Ergonomic backrest with comfort breeze straps.

- 4-stage filtration system
- Low 66 dB noise level
- 4' crush-proof hose
- Adjustable telescopic wand

3 PROVEN SYSTEMS



WOOD FLOOR MAINTENANCE

Basic Coatings® provides ultimate protection for your wood floor. Our cleaning solutions provide professional hardwood maintenance to keep your floors looking their best.



SYSTEM 1 INTENSIVE CLEANING

Aggressively scrubs the flooring to remove buildup of dirt and contaminants. This can be done alone or as a routine maintenance procedure.

- Scrub with wood floor scrubber and I.F.T.
- Repeat scrub with wood floor scrubber and Squeaky™
- Tack with microfiber pad and Squeaky



SYSTEM 2 CLEAN & REFINISH

A combination of the Intensive Cleaning step and the quick and easily applied Hardwood Floor Refinisher. This system removes dirt from the floor and restores a uniform sheen.

- Scrub with wood floor scrubber and I.F.T.
- Repeat scrub with wood floor scrubber and Squeaky
- Apply Hardwood Floor Refinisher with a microfiber pad



SYSTEM 3 TYKOTE® RECOAT

A combination of the Intensive Cleaning step and a water-based floor finish. This system extracts dirt from the floor and then restores the floor with an extremely durable protective finish.

- Scrub with wood floor scrubber and I.F.T.
- Repeat scrub with wood floor scrubber and Squeaky
- Apply TyKote® with a microfiber pad
- Top coat with a Basic Coatings® water-based finish

FLOOR MAINTENANCE & SPECIALTY

Squeaky™ Concentrate
Hardwood Floor Cleaner



Commercial hardwood floor cleaner.

- No dulling residue
- Excellent choice for routine cleaning of dirt, grease and scuffs
- Environmentally safe

Item #	Size
B0695-0412	4 - 1 Gal. Bottles
B0695-0512	1 - 5 Gal. Pail

Squeaky™
Ready-to-Use Hardwood Floor Cleaner



Cleaner for wood and laminate floors.

- Routine maintenance
- No dulling residue
- Excellent choice for routine cleaning of dirt, grease and scuffs
- Environmentally safe
- Available in ready-to-use kit, 32 oz. trigger sprayers bottles or 1 gallon refill bottles

Item #	Size
B1126-0412	4 - 1 Gal. Bottles
B1126-1612	6 - 32 oz. Oval w/ trigger
B1126-0119	6 - Floor Care Systems Each kit Includes: • 1 - 32 fl. oz. Squeaky cleaner • 1 - complete mop • 1 - microfiber pad

Hardwood Floor Refinisher
Water-Based Urethane Coating



Easy maintenance coat for wood floors.

- Easy to apply
- Revitalizes dull floors
- Durable water-based urethane coating
- Green, low VOC

Item #	Size
B1830-1612	6 - 32 oz. Oval Bottles

I.F.T.
Intensive Floor Treatment



Aggressive wood floor cleaner.

- Removes tough grit and grime
- Deep, intensive cleaning
- Removes household waxes, oils and polishes

Item #	Size
B1111-0412	4 - 1 Gal. Bottles
B1111-0512	1 - 5 Gal. Pail

TyKote®
Dust-Free Recoat Bonding Agent



Dust-free bonding agent prepares wood floors for recoating.

- Eliminates the dust, noise, and mess of traditional abrasion
- Applies easy, dries in 1 hour
- Excellent for use over aluminum-oxide, prefinished, or distressed wood floors

Item #	Size
B0691-4312	4 - 1 Gal. F-Style Bottles

Dissolver™
Floor Polish Remover



Removes acrylic finish from wood floors.

- Rinse free
- Low foaming
- Low odor

Item #	Size
B0541-0412	4 - 1 Gal. Bottles



REFINISHING SOLUTIONS

Our innovative TyKote[®] System makes it easier to achieve beautiful floors in less time with no dust or mess. The fast and easy-to-use 3-step process means wood floors can be recoated overnight, and you can be back in business the next day.



PROFESSIONAL HARDWOOD MAINTENANCE TYKOTE[®] DUST-FREE REFINISHING SYSTEM



STEP 1 PREP & CLEAN

I.F.T. provides unsurpassed cleaning in heavily soiled areas. Squeaky[™] is then used to remove residue and neutralize the floor.



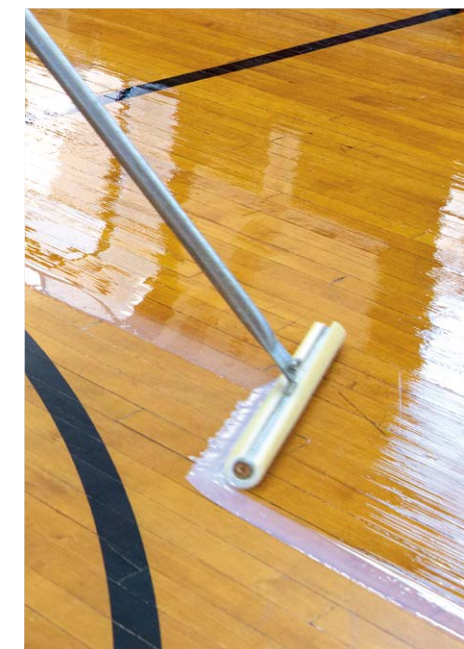
STEP 2 BOND

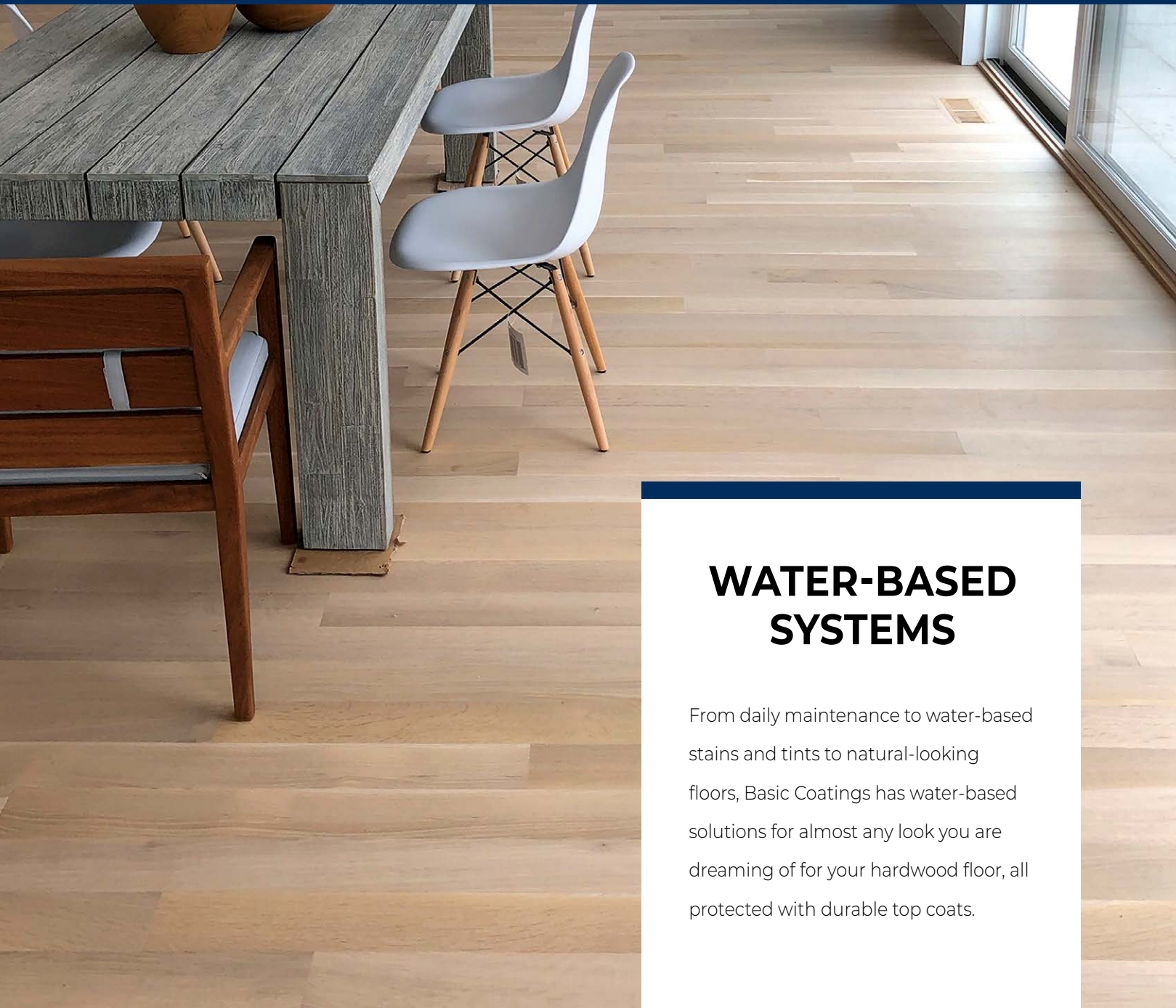
TyKote[®] is the revolutionary way to prepare wood floors for recoating. Its exclusive properties act as the bonding agent between the existing floor and the new topcoat.



STEP 3 FINISH

Basic Coatings StreetShoe[®] NXT, EasyStreet[™], Emulsion[®] PRO+, MainStreet[®], or PureMatte[®] offer unmatched beauty and durability. The flexibility of the TyKote[®] System enables it to be used with any Basic Coatings water-based urethane finish.





WATER-BASED SYSTEMS

From daily maintenance to water-based stains and tints to natural-looking floors, Basic Coatings has water-based solutions for almost any look you are dreaming of for your hardwood floor, all protected with durable top coats.

PROTECTED NATURAL FLOORS

This system preserves the natural look of bare wood while protecting it with a high-end, durable matte finish.

RECOMMENDED USE

For natural looking, protected wood floors.



LIGHT COMMERCIAL & RESIDENTIAL DURABILITY

This system accents the natural wood tones with a crystal clear finish - from high gloss to low sheen.

RECOMMENDED USE

Light-traffic, commercial environments such as offices, classrooms, smaller retail stores, and private homes.



DEMANDING COMMERCIAL & HIGH-END RESIDENTIAL

This system provides the most outstanding performance, durability and beauty.

RECOMMENDED USE

High-traffic, commercial environments such as malls, restaurants, retail store and private homes.



TRADITIONAL FLOORS

Many home owners appreciate the traditional warm, rich amber tones of oil-based finish. This system is everything you expect from oil, but with the ease of application and high durability of a water-based coating.

RECOMMENDED USE

Residential, commercial and sport wood flooring.



TYKOTE[®] RECOATING SYSTEM

Unique to Basic Coatings[®], this "one-day recoating system" is ideal for jobs that require minimal downtime.



TRADITIONAL RECOATING SYSTEM

When screening and recoating is preferred, you can count on this system for dependable results.





HYPERTONE™ STAINS

HyperTone™ Stains utilize a proprietary water/oil hybrid technology to deliver high-quality pigment of unmatched depth and vibrance, bringing out the beauty of hardwood floors in commercial, residential, and sports environments. This first-of-its-kind formulation provides unrivaled color penetration, but with all the benefits of a water-based stain.

- Can be used as stain or tint
- Unlimited colors
- Reduced blotching
- Easy to apply
- Non-flammable
- Low odor
- Easy to clean

REGENCY SERIES



PRIMARY SERIES



DESIGNER SERIES



ADDITIVE / DRY TIME EXTENDER



Use up to 18 ounces of StainGlide per gallon to help extend dry time, blend and reduce lap marks. Highly recommended when using as a stain; do NOT use when using as a tint.

For information go to basiccoatings.com/solutions/hypertone-stains or call 888-441-1934 today!

PRODUCT SELECTION GUIDE

WATER-BASED FINISH	SHEEN	1 GALLON	5 GAL. PAIL	VOC
PureMatte®	Commercial Matte	B1663-4312	N/A	<100
StreetShoe® NXT	Commercial Gloss	B1664-4312	B1664-0512	<150
	Commercial Semi-Gloss	B1665-4312	B1665-0512	
	Commercial Satin	B1666-4312	B1666-0512	
	Commercial Super Matte	B1667-4312	B1667-0512	
MainStreet®	Commercial Semi-Gloss	B1692-D612	N/A	<165
	Commercial Satin	B1693-D612	N/A	
	Commercial Super Matte	B1694-D612	N/A	
EasyStreet®	Commercial Gloss	B1655-4312	N/A	<275
	Commercial Semi-Gloss	B1656-4312	N/A	
	Commercial Satin	B1657-4312	B1657-0512	
	Commercial Super Matte	B1658-4312	N/A	
Emulsion® PRO+	Commercial Gloss	B0675-4312	B0675-0512	<275
	Commercial Semi-Gloss	B1620-4312	B1620-0512	
	Commercial Satin	B1619-4312	B1619-0512	
	Commercial Super Matte	B1623-4312	N/A	
SPORT FINISH	SHEEN	1 GALLON	5 GAL. PAIL	VOC
Player's Choice™ One	Commercial Gloss	B1659-4312	B1659-0512	<275
GymShoe®	Commercial Gloss	B1677-4312	B1677-0512	<275
StreetShoe® NXT	Commercial Gloss	B1659-4312	B1659-0512	<150
Emulsion® PRO+	Commercial Gloss	B0675-4312	B0675-0512	<275
WATER-BASED SEALER	SHEEN	1 GALLON	5 GAL. PAIL	VOC
VersaSeal®	Commercial Gloss	B1691-D1612	N/A	<200
Lock 'N Seal™	Commercial Gloss	B0661-4312	N/A	<275
Hydroline® Sealer	Commercial Gloss	B0656-4312	B0656-0512	<275
Raw Sealer	Commercial Gloss	B1680-D612	N/A	<275
MAINTENANCE	QUART	1 GALLON	5 GAL. PAIL	VOC
Squeaky® Concentrate	N/A	B0695-0412	B0695-0512	<4%
Squeaky® Ready-to-Use	B1126-1612	B1126-0412	N/A	<4%
Squeaky® Floor Care System	B1126-0119	N/A	N/A	<4%
I.F.T	N/A	B1111-0412	B1111-0512	<4%
SPECIALTY	QUART	1 GALLON	5 GAL. PAIL	VOC
TyKote®	N/A	B0691-4312		<150
Dissolver™	N/A	B0541-0412		N/A
Harwood Floor Refinisher	B1830-1612	N/A	N/A	N/A

TRAINING

Basic Coatings offers a series of training classes at our training center in Bowling Green, OH. Basic Coatings also partners with the National Wood Floor Organization and holds several classes to help educate the next generation of wood floor professionals.

To view all of our training options, visit: basiccoatings.com/resources/training or call 888-441-1934 today!



For more information, contact your Basic Coatings® distributor, visit our website at www.basiccoatings.com or call us toll-free at 800-441-1934.



Where Great Finishes Start

©2024 Basic Coatings
All Rights Reserved.
400 Van Camp Road
Bowling Green, Ohio 43402
800-441-1934
basiccoatings.com
Item #B91225-0112 | 04/24

